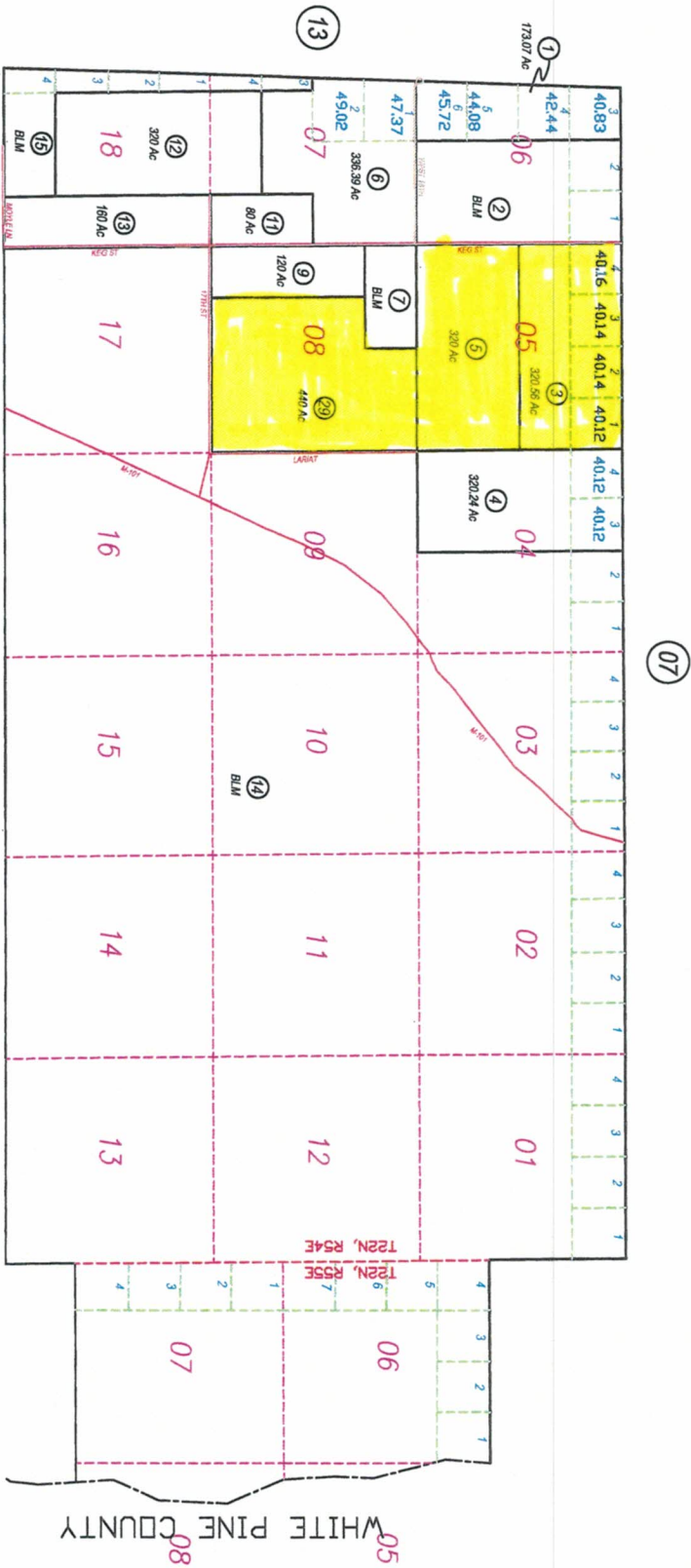


N2 T22N, R54E - N2 T22N, R55E

07-14



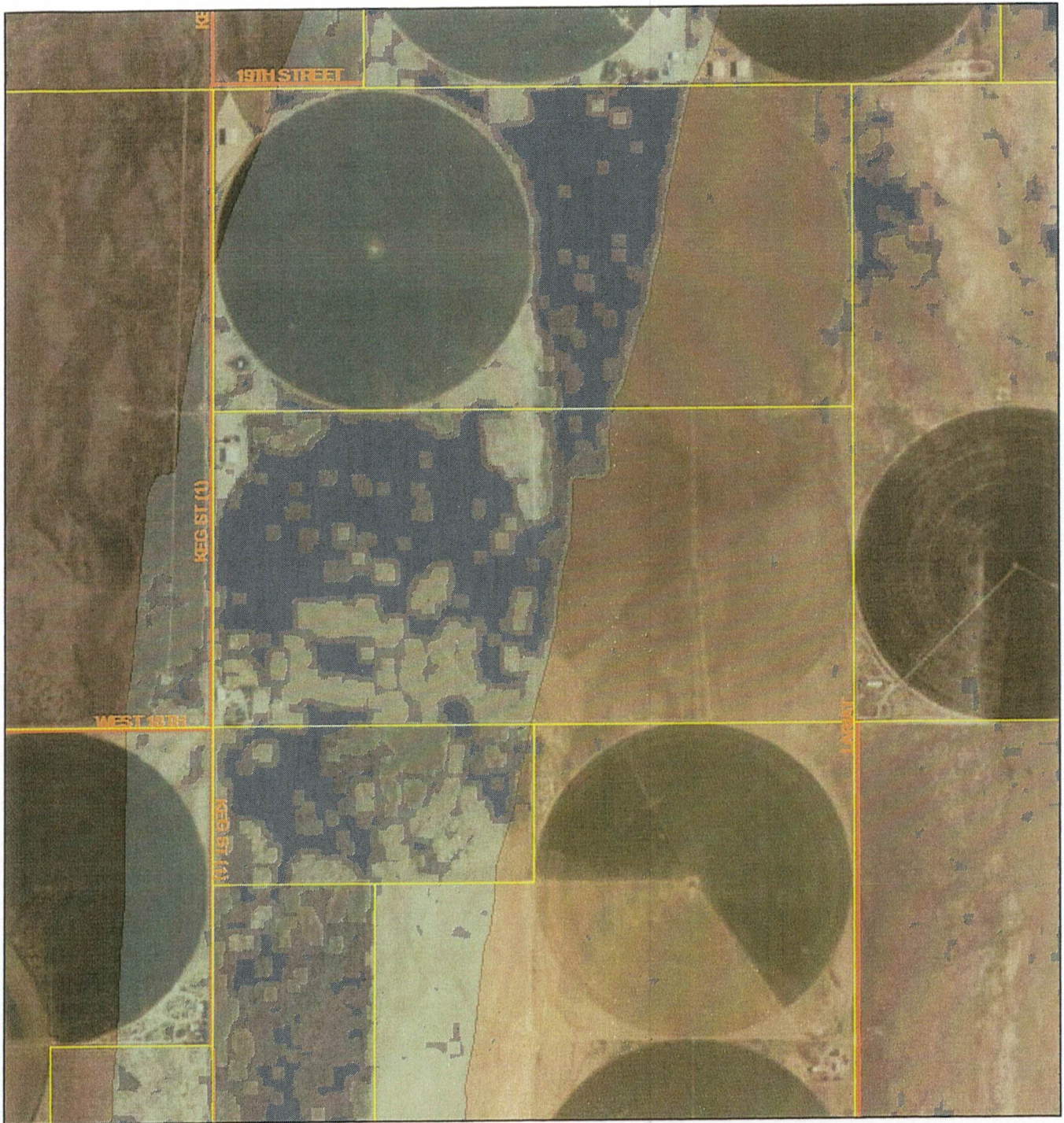
NOTE: This plat is the estimated boundary only and does not represent a survey. An actual survey should be made to determine the exact boundaries. The surveyor is not responsible for any errors or omissions in this plat. The surveyor's office is located at 1000 1st St., Eureka, CA 95501.

REV/DUDAS/WH 8/28/21




EXDUC/JAN 8/28/21
SCALE 1"=600'

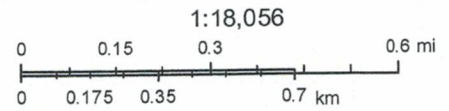
EUREKA COUNTY

Eureka County, Nevada



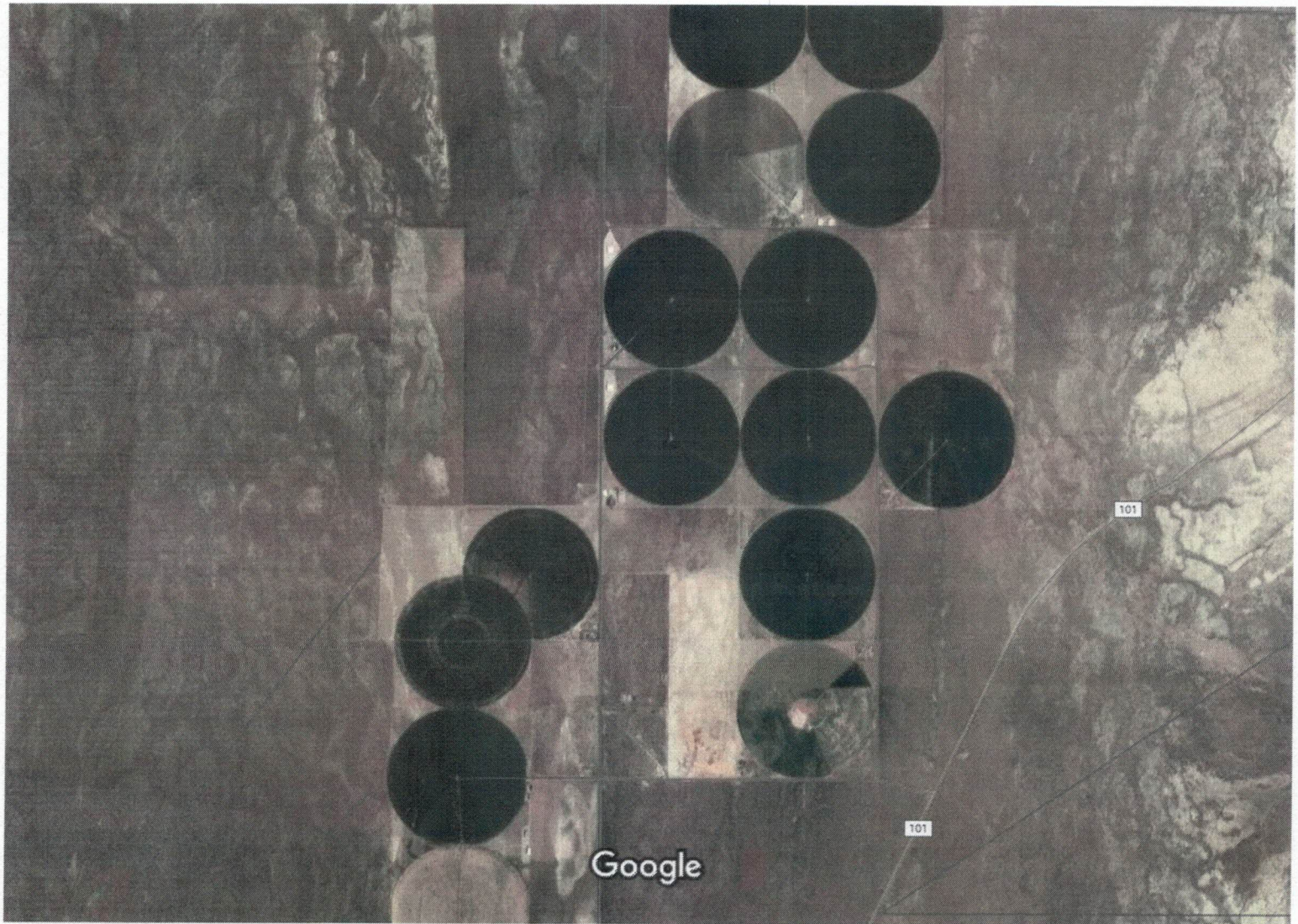
April 20, 2017

-  parcels
-  eureka_county_roads
-  FEMA_flood_zones

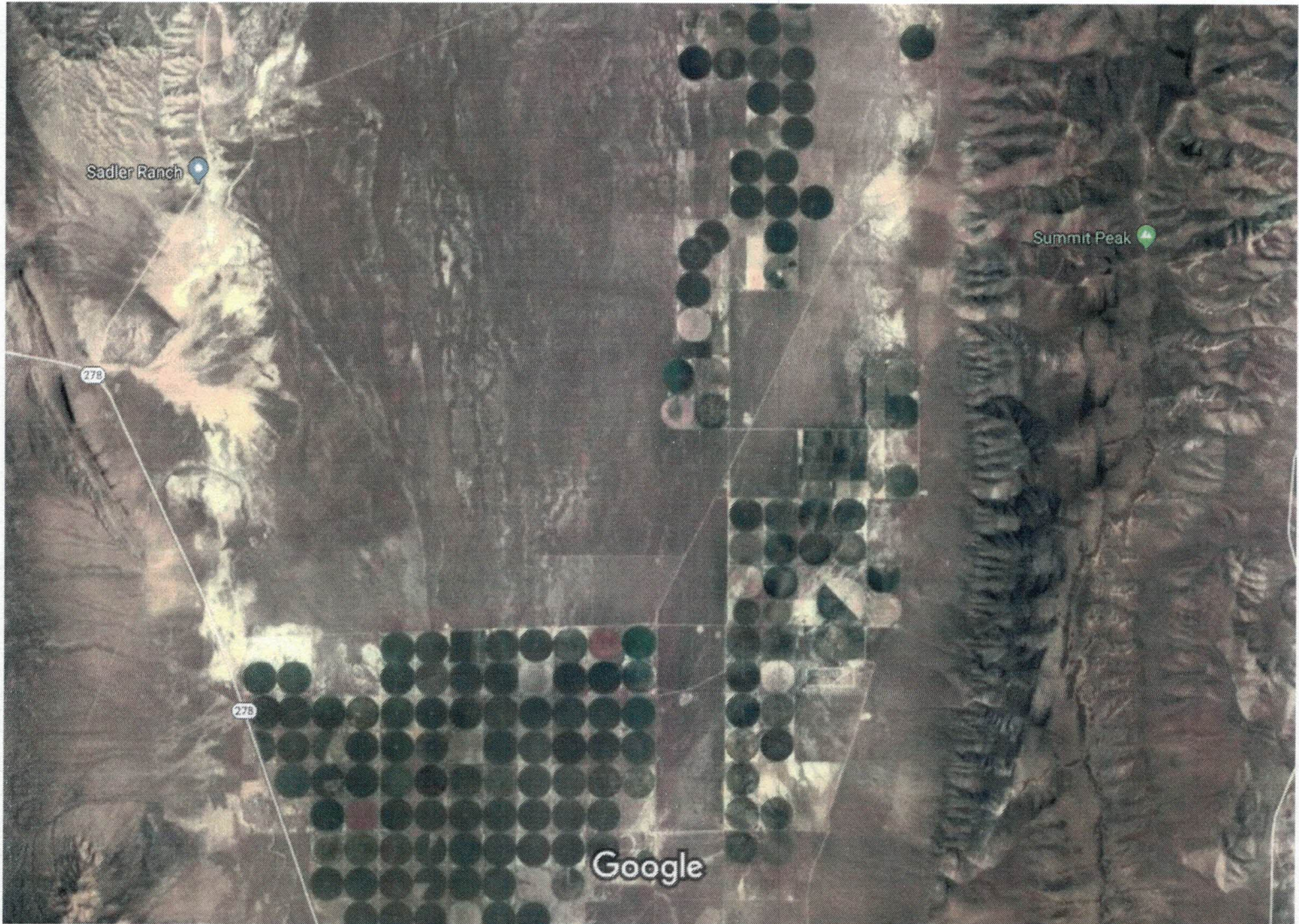


Esri, HERE, DeLorme, MapmyIndia, © OpenStreetMap contributors, and the GIS user community
Source: Esri, DigitalGlobe, GeoEye, Earthstar Geographics, CNES/Airbus DS, USDA, USGS, AeroGRID, IGN, and the GIS User Community

Google Maps



Imagery ©2018 DigitalGlobe, Landsat / Copernicus, USDA Farm Service Agency, Map data ©2018 Google 2000 ft



Imagery ©2018 TerraMetrics, Map data ©2018 Google 2 mi